

INTEGRAL ROTARY

PRODUCTION HARDNESS TESTER WITH ROTARY TABLE

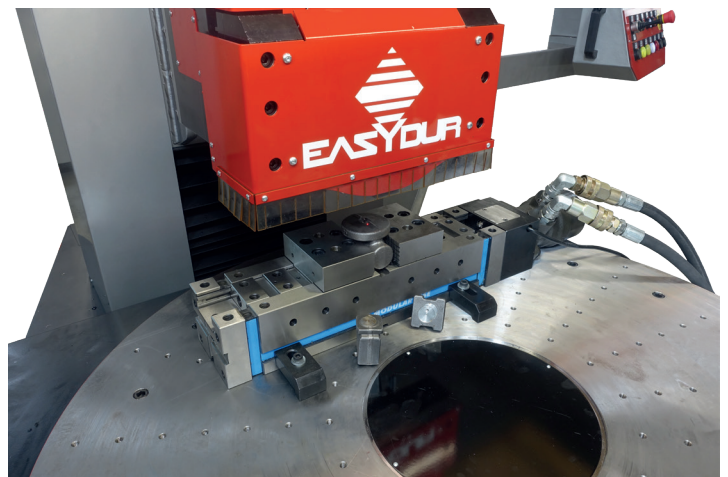


Integral Rotary was designed by Easydur as a **production hardness tester**. It can be considered a working island, as it is equipped with a test axis and an additional turning table, as well as a second Y axis to move the turning table back and forth in relation to the head.

The motors of Integral Rotary are directly interfaced with the computer, They are programmed together with the work programme using **proprietary software developed by Easydur**.

INTEGRAL ROTARY:

The rotary table can be programmed to accept a single large piece, on which various radial and angular tests will be carried out. Alternatively, it can be set up for the use of Integral Rotary as a production machine for testing several smaller pieces, interfaced with a robot for loading/unloading pieces from the rotary table, which can be programmed in steps of 2, 4, 6, 8, n positions.

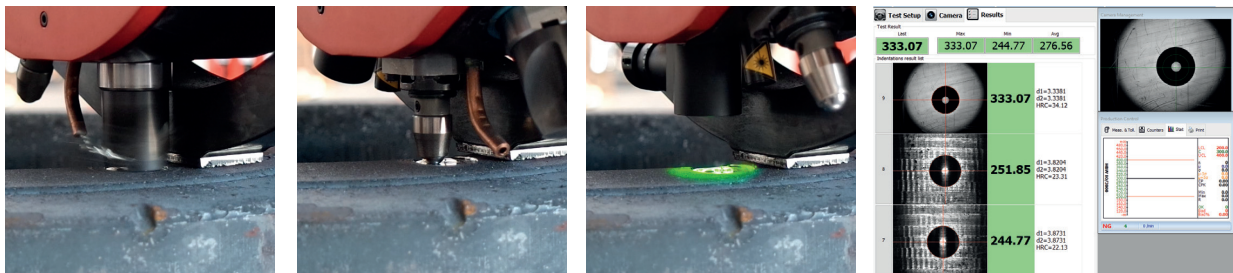


INTEGRAL ROTARY

PRODUCTION HARDNESS TESTER WITH ROTARY TABLE

Equipped with the special **Multi-slot head** designed by Easydur, INTEGRAL ROTARY can:

- Automatically perform surface preparation, adjusting RPM and test depth (up to 5 mm) through a dedicated slot inside the revolver head
- Complete the indentation, using the appropriate indenter
- Read the indentation using the optical system with autofocus
- Generate the test report, which is directly forwarded to the company management system



TECHNICAL CHARACTERISTICS:

Surface preparation even on small pieces without clamping	
Possibility of milling pieces up to	55 HRC
Adjustable milling depth	from 0 to 5 mm (Ra 2.5 to 3.2)
Test loads	750 - 1.000 - 3.000 Kg
Spheres from	Ø 5 mm to Ø 10 mm
OPC-UA Module for Interface 4.0 with Management Software	
Functional control with a single command	
Solid Steel Structure (not cast iron)	
Totally flexion-free swivel	
Self-learning	

INTERFACEABLE EXTERNAL HARDWARE

- Marker
- QR/BAR Code Reader
- Optical instruments in general
- Automatic Lines
- AGV intelligent forklifts
- Automatic bridge crane

