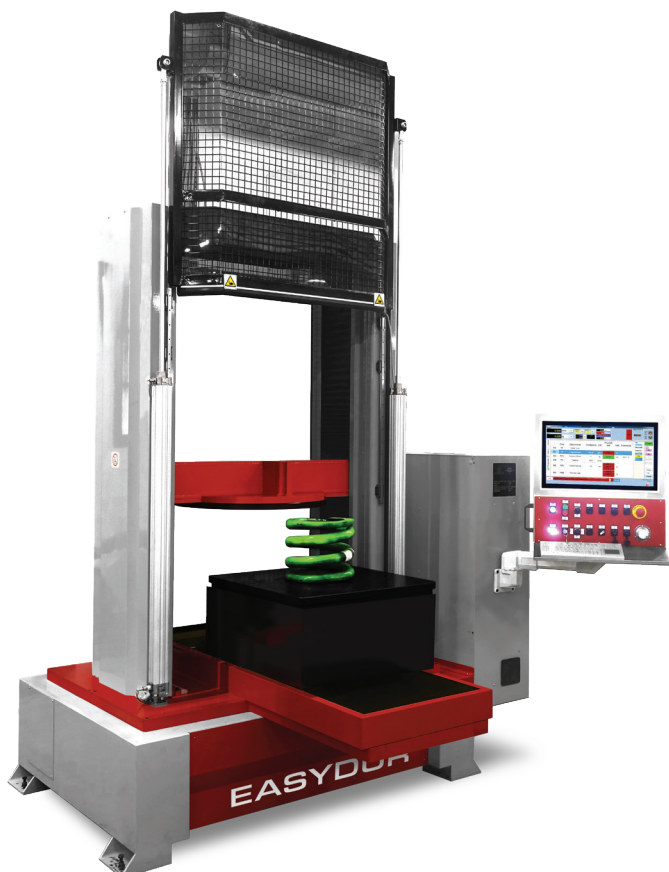


AURA CHASSE

COMPRESSION TESTS ON RAILWAYS SPRINGS

Electromechanical machine able to perform loads from 5 to 60 tons for compression tests on railway springs with a 0,5% - class precision or better. Equipped with a full motorized platform aimed to detect axial, transversal and lateral stiffness, deflection and bowing angle according to Railway standards, such as: EN 13298, EN 13913 (conical springs).



DATA SHEET

Standard height: 2500 mm

Standard width: 1900 mm

Standard depth: 1100 mm

Electric axle max run: 500 mm

Working height: from 1000 to 2000 mm

Working width: from 800 to 1500 mm

Min division: 0.005 mm

Max load: 5-60 T

Min division: 1/32700

Speed: from 1000 to 3000 mm/min

Chasse displacement: from 50 to 100 mm

FEATURES

Axial, transversal and lateral stiffness

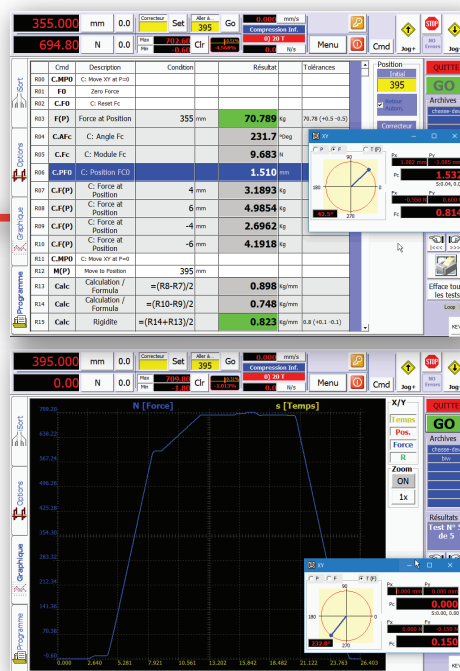
Bowing angle

Motor-driven automatic XY-lower table with a 0.01 mm resolution

Automatic indication of the lateral chasse and its relative angle

Lateral Forces (Fx, Fy)

Goniometrically engraved disc for chasse-marking indication



user-friendly software

EASYDUR SRL

Via Maja 5 - 21051 Arcisate (VA) - Italy - Tel. +39 0332 203626 - Fax +39 0332 206710

info@easydur.com - www.easydur.com